



## A40 Smart Corridor HIF2 Planning Application

### What's it all about?

Oxfordshire County Council has submitted a planning application for:-

- The dualling of approximately 3.2km of the A40 carriageway from the existing Hill Farm junction at Witney to the Eynsham Park and Ride site (R3.0057/19) including the construction of two new roundabouts;
- An eastbound and westbound bus lane approximately 6.5km in length from the Eynsham Park and Ride site to existing structures at Duke's Cut waterway.
- Capacity and connectivity improvements over the existing structures at Duke's Cut waterway to enable the proposed eastbound bus lane to extend over the existing structures up to the A34 flyover in the east, forming a connection into Oxford North (Northern Gateway) strategic development site;
- Construction of a new signalised junction to the Eynsham Park and Ride site;
- New pedestrian/cyclist underpass at Cuckoo Lane ('the Eynsham Underpass').
- Two new pedestrian/cycle bridges at Cassington Halt (Cassington Halt Footbridge North and Cassington Halt Footbridge South);
- Widening of Cassington New Bridge;
- Demolition and replacement/extension of existing White House Culvert;
- Demolition and replacement/extension of Barnard Gate New Culvert;
- New and improved shared use footways and cycleways, including new shared use links to National Cycle Network (NCN) Route 5 at Duke's Cut waterway;
- Alterations to existing junctions and property accesses along the A40;
- Controlled crossings, external lighting, noise barriers, sustainable drainage systems, landscaping, habitat creation including ecology ponds and associated hibernacula; and
- All associated engineering and temporary construction works, site compound and storage areas.

---

There are nearly 500 documents/drawings submitted that form this planning application and these are available online under application number [R3.0151/21](#). The following documents are recommended as 'priority' overview documents for residents to read:-

- [Planning Statement](#)
- [ES Non-Technical Summary](#)
- Design & Access Statement:-
  - [Part 1](#)
  - [Part 2](#)
  - [Part 3](#)

Oxfordshire County Council advise that a paper copy of the application is available at County Hall.

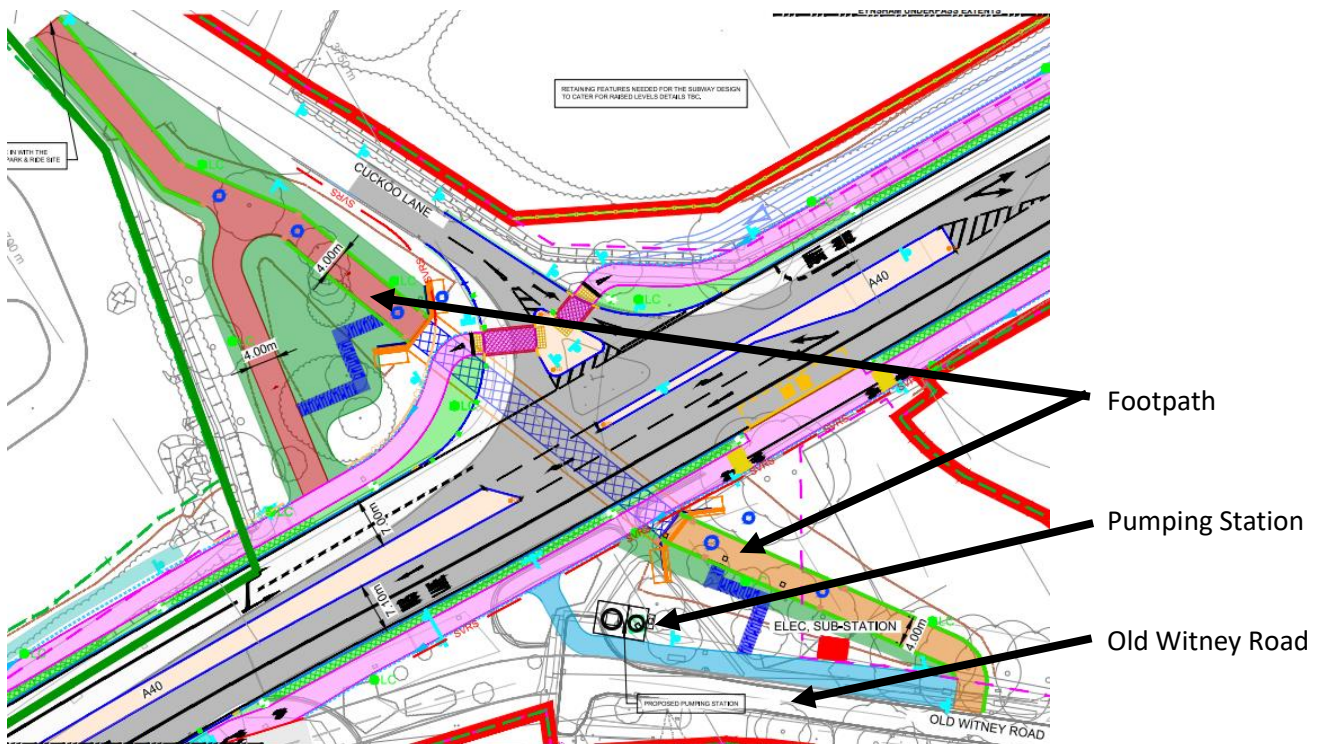
Eynsham Parish Council welcomes increased public services and encourages active travel, however it remains to be seen if the new bus lanes will offer any real benefit over the existing S1 and S2 services especially in light of the removal of the bus lanes on Woodstock Road.

We are yet to see clear evidence that shows that the Park & Ride scheme location will attract 1000 daily commuters to use the facility and the associated bus service.

## What are Eynsham Parish Council's main concerns?

### 1. Proposed underpass off Old Witney Road

- This crossing is in the wrong location as its not central to the existing community. Pedestrians will use the most direct route to cross the A40.
- Current design prohibits a clear view/sightlines.
- The underpass, the surrounding community and its users will be vulnerable to antisocial behaviour and crime as highlighted in the [Thames Valley Police response](#).
- At grade crossings are supported instead of the underpass. Community severance<sup>1</sup> (social and psychological barriers and social impacts) will be experienced by current and future residents and should be avoided.
- Because of the points above, the funds spent on the underpass could be better used elsewhere.

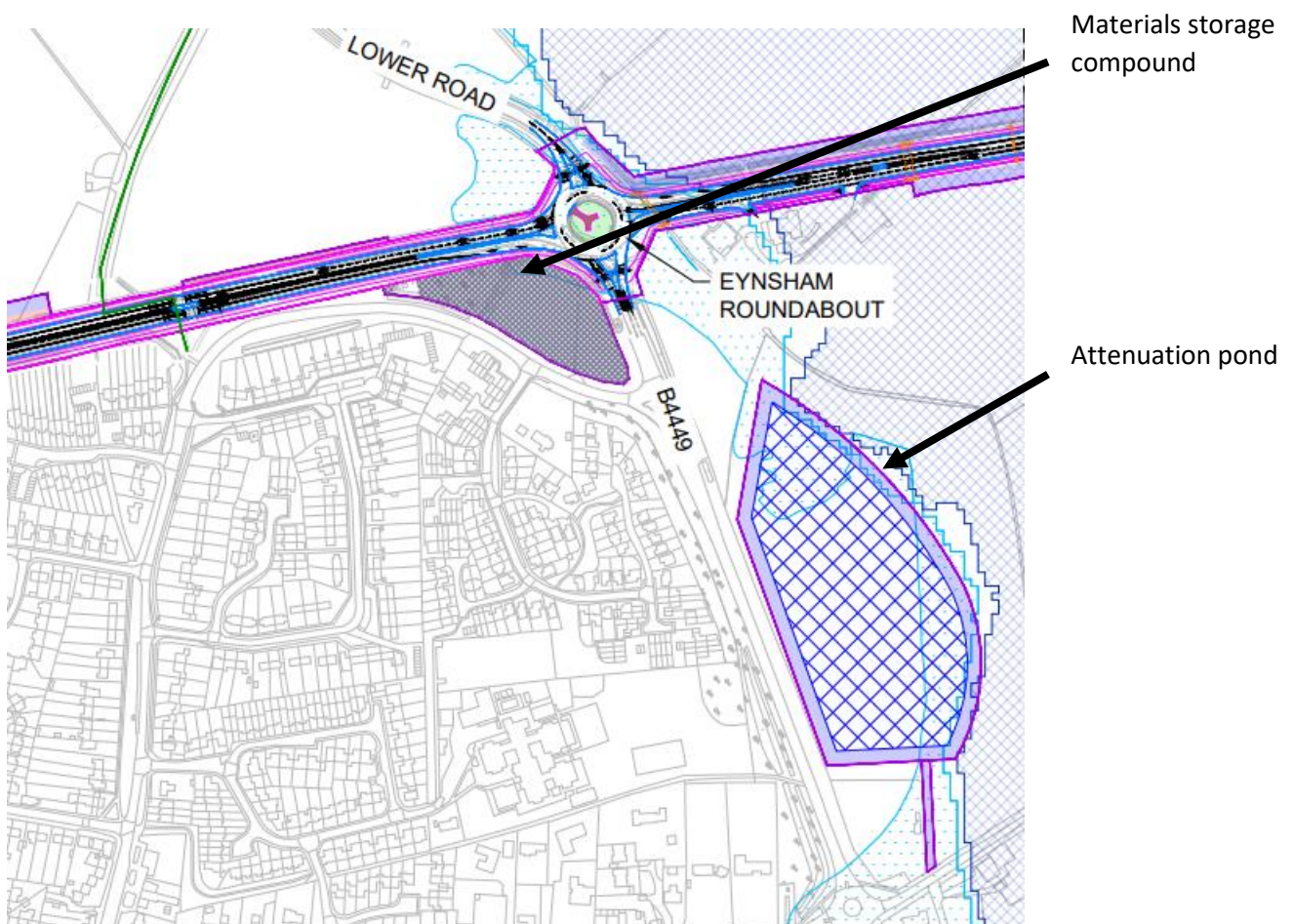


(Available at: [A40 Eynsham Underpass General Arrangement Sheet 1 Of 1 Und ACM HGA E2 EW ZZ ZZ DR CH 0101](#))

<sup>1</sup> Bradbury, A (2014) *Understanding Community Severance and its Impact on Women's Access and Mobility in African Countries – Literature Review*. Available at: <https://assets.publishing.service.gov.uk/media/57a089c440f0b64974000262/Severance-LitReview-AFCAPgen127j-v140729.pdf> Accessed 31.01.2022.

## 2. Materials Compound adjacent to Dovehouse Close

- Noise, dust, light pollution and disturbance may be experienced by residents in the proximity of a materials storage site which is planned for the land inbetween the B4449 and A40. There appears to be no assessment of this area in the '[Population and Human Health Environmental Statement.](#)'
- At 6.6.5 of the Chapter 6 Biodiversity document, it states "The design of compounds has sought wherever possible to limit the requirement for the removal of hedgerows or potential impacts on existing mature trees. Wherever possible, site compound locations will utilise existing gateways/access points to avoid the requirement for loss of hedgerow habitat or mature trees."
- At 6.6.6 "All compounds will be reinstated to existing land use following completion of construction (approximately 30 months duration). Grassland areas will be sown with a suitable species mixture to reinstate a sward of similar or higher diversity than currently present."



(Available at: [A40 ES Vol LI Appendix 2 A Final Part 2](#))

## 3. Biodiversity Net Gain (BNG) (Chapter 6 Biodiversity Environmental Statement)

Details of a biodiversity net gain of 10% (as required by the [Environment Act 2021](#)) is not shown to be met. At 6.4.102, it states "A short list of offsite BNG opportunities has been developed, which at the time of writing are being discussed with landowners, seeking agreement in principle to these enhancements (subject to planning permission for the proposed development being granted). Once agreement in principle is reached with landowners, the BNG calculations and reporting will be finalised and submitted to OCC as the Authority." There are no details available! The Parish Council will not support any biodiversity net gain proposals where it can be demonstrated the gain will already have taken place regardless of the needs of this planning application.

We note at 6.7.20, “ The construction of the proposed development will result in the permanent loss of the following habitats:

- Approximately 3.6ha of semi-improved neutral grassland;
- Approximately 12 ha of improved grassland;
- Approximately 13.5ha of species poor semi-improved grassland;
- Approximately 10.1ha of arable;
- Approximately 0.6ha of amenity grassland;
- Approximately 1.4ha of semi-natural broadleaved woodland;
- Approximately 3.2ha of broadleaved plantation woodland;
- Approximately 0.3ha of mixed plantation woodland;
- Approximately 2.7ha of dense and scattered scrub;
- Approximately 1ha of tall ruderal vegetation;
- Approximately 10,520m of species rich hedge, of which 4,780m is intact, 5,630m is with trees and 110m is defunct;
- Approximately 1,195m of species-poor hedge, of which 845m is intact and 350m is defunct;
- Four ponds;
- Approximately 68m of river habitat, brook and wet ditch; and
- Approximately 1100m of dry ditch.”

Mitigations for these losses are detailed in the document, however we question how long it will take for those to contribute towards the natural environment.

It is also unclear how much of Eynsham’s Millennium Wood (Local Green Space 1 - Eynsham Neighbourhood Plan) will be compulsory purchased by OCC and vegetation removed, to make way for a footpath.