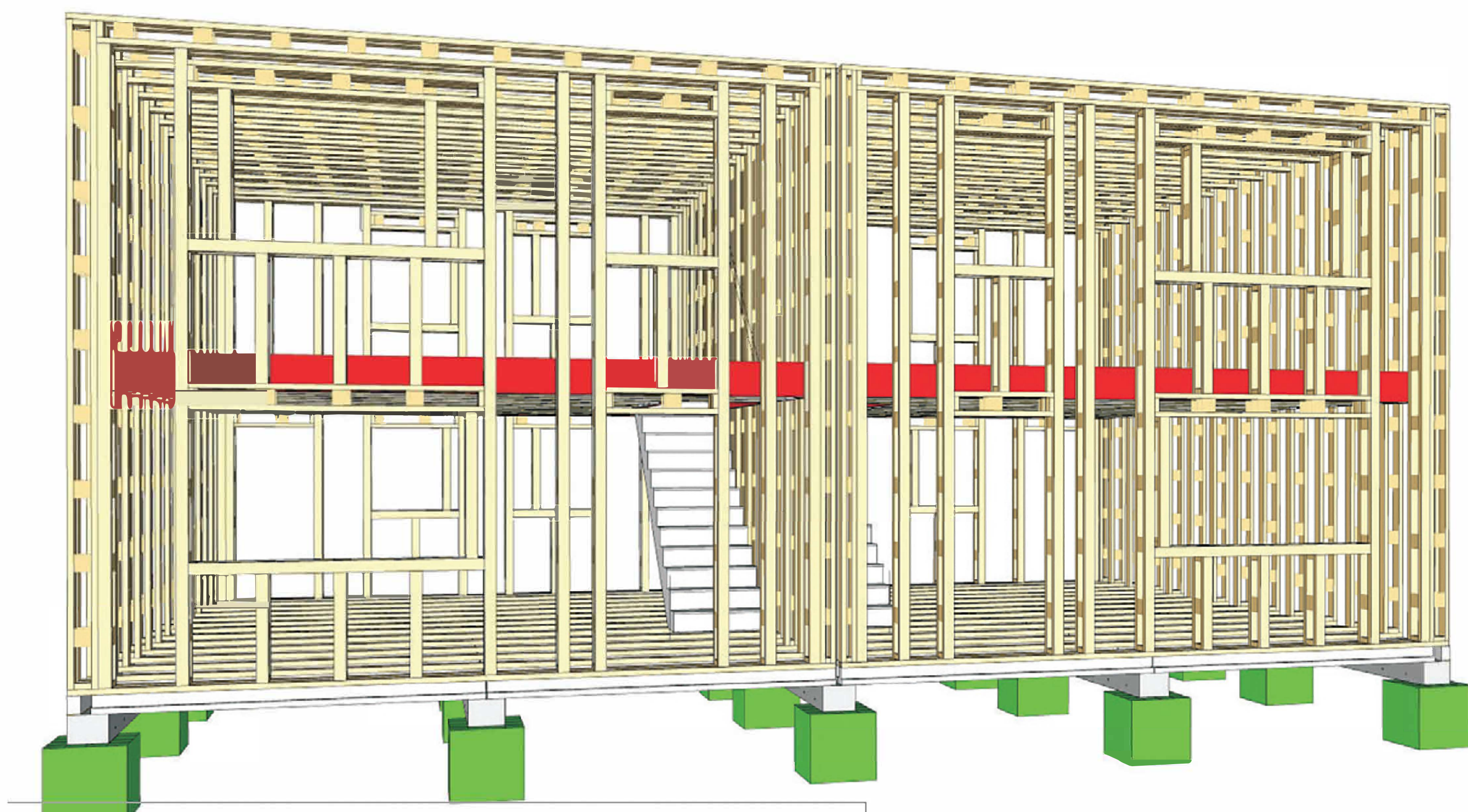


PASSIVHAUS HOMES IN Eynsham

Passivhaus is a super insulated, airtight building system which slashes heating costs and carbon emissions.

It is very hard to make all the building planned around Eynsham really sustainable, but if development happens here, Green TEA is determined that it is fit for the 21st century and sits lightly on the planet.

GreenTEA is pushing for Passivhaus standards which can help achieve net zero carbon along with a clean green energy supply.



A recent Passivhaus in the village is on the corner of Clover Place and Witney Road. Built using the Beattie Passive Building System 'an innovative super-insulated timber frame system' with trainees from social enterprise Toolshed.

Benefits of a certified Passivhaus include:

- Up to 90% reduction in heating requirements- and bills
- Up to 100% reduction in operational CO2
- High level of living comfort
- Heat recovery

The Beattie system 'can be built at construction costs which are similar or less than the costs of standard construction'



www.beattiepassive.com

Green TEA thinks Passivhaus standards and lower 'embodied carbon' (eg using timber) are part of the future. We are pleased that the Area Action Plan for the garden village requires zero carbon building. But we need to make these standards stick and they should apply to West Eynsham too!