



EPC Consultation Supporting Information

7th May 2020

What is Nature Recovery Network?



- Community Action Group (CAG) Oxfordshire, CAG network funded by OCC
- Applying to register as a charity
- A growing network of individuals, community groups and businesses.
- So far involved: Eynsham Society, GreenTEA, Eynsham Garden Club, Peace Oak Community Orchard, Eynsham Allotment Association, Rotary Club, Carnival Committee, Eynsham Primary School, Bartholomew School, 5 other primary schools under the Eynsham Academy, Eynsham Scouts and Guides, Eynsham Morris, Market Garden, Evenlode DIY, Siemens Factory, Eynsham Fire Station
- Public Liability Insurance covered by CAG Oxfordshire
- Community Engagement to measure and restore biodiversity in Eynsham
- Formed in well attended public meeting on 15th January, 250+ people, following 6 week public consultation through Map in Market Garden
- Website and mailing list
- 2 x parish walkabouts with Eynsham's professional environmentalists and Parish Council Members

What is Nature Recovery Network's Mission?



Nature Recovery Network is designed as a network that connects individuals and groups at the local level, through a dedicated website (under construction) enabling them to pool physical, financial and knowledge resources for nature recovery.

The Network will initiate and support projects which bring together local communities at the parish level to:

- Generate community proposals for biodiversity gain
- Implement these proposals over time
- Facilitate community mapping of the biodiversity of the parish (water courses, hedgerows, veteran trees, woodland, species-rich verges)
- Facilitate community surveys of the habitats (plus air pollution surveys) to assess their quality, and as a basis for follow up professional surveys. The surveys will ensure that there are measurable outcomes of the interventions.
- Use the data gathered to create a baseline from which to set targets and monitor recovery of habitats and wildlife over time. Collate, store, analyse and disseminate data to create a local professional resource that can be used in discussion of development and planning (e.g. feeding into Thames Valley Environmental Records Centre) and for further research.

Pilot Areas for Wildflowers: Design and Plans



Pilot Areas for Wildflowers, proposed in response to Nature Recovery community proposals (Market Garden Map Nov-Jan, and Meeting: January 15th) where creating wildflower areas received the most votes, followed by tree-planting (see attached PDF).

1. Three Roundabouts on B4449 Eynsham ring road (at intersections of Station Road, Oxford Road and Newlands Road); Area: 470m²
2. Fishponds: part of grassed Area at entrance to Car Park, Station Road, Eynsham OX29 4HX; Area: 100m²
3. Dovehouse Close part of grassed area of field adjoining primary school, Eynsham OX29 4EW; Area: 200m²



Roundabouts

Roundabouts: wildflower 'meadow' creation to increase diversity of species-poor grassland. The roundabouts contain mainly species-poor grassland with some stumps of non-native shrubs around the edge that will need removal. Preliminary survey, early march: dandelion, white clover, ribwort plantain, sow thistle.

The proposal to create wildflower areas on the roundabouts addresses the concern expressed at the Parish Council meeting of 14th March for the need for low growing plants to keep sightlines across the roundabouts.

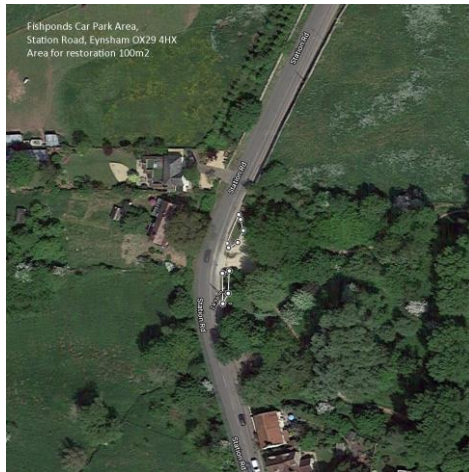
The seed mix chosen will be Charles Flowers 'Amenity Meadow Mix'. This mix includes common vetch, white campion, field scabious and lesser knapweed. The 4 species of grasses are low growing fescues. The mix is chosen for its adaptability, as well as for providing good colour and nectar. Yellow rattle (a plant that is semi-parasitic on grass) will be sown in September of the first year to reduce the vigour of the grass. The wildflower/grass mix will be sown in September of the second year.



Fishponds

Fishponds. Grass at entrance to Car Park at Fishponds. Here it is intended to create two small wildflower patches in the sunny parts of the existing grass area at the entrance to the car park. One resident has already created a small area here in memory of his wife, and the project would extend and support the management of this area. Basic survey done in early March found: Dandelion, Clover, Yarrow, Sow Thistle, Ribwort plantain.

The seed mix chosen for these sites will also be Charles Flower's 'Amenity Meadow Mix'.



Local champions identified, work will be done by volunteers

Dovehouse Close



Dovehouse Close. Dovehouse Close Grass Area. This area links to a popular footpath. The proposal is to create a small wildflower area in the first section close to the road, which is in full sun. Basic survey done in early March found: Meadow Cranesbill, Yarrow, Daisy, White clover, Dandelion

The seed mix chosen for these sites will also be Charles Flower's 'Amenity Meadow Mix'.



Path will remain through centre for access to play area, work completed by volunteers, local champion already involved



Method

The plan is to survey sites in early July (community survey – Covid 19 permitting - and professional survey), rotavate the sites in July and again in August, 2020 to expose roots to the sun to reduce the existing vegetation (avoiding the use of herbicide). In July, a local artist, Anne Gingell, will design signs for wildflower meadow creation areas ‘Nature Recovery in Progress’ to inform the community. In September 2020, yellow rattle will be sown at a rate of 1gm per square metre (seed sown by community). In May 2021, all areas will be cut at a height of 8 inches to keep vigorous plants in check (height determined to protect rattle) and arisings removed. In June 2021, a further survey will be carried out by members of the community. In late August 2021, the areas will be rotavated again in preparation for sowing the wildflower seed mix in September 2021 at a rate of 1gm per metre square (seed sowing by community). In May 2022, all areas will be cut at a height of 8 inches to keep vigorous plants in check (height determined to protect rattle) and arisings removed. In June 2021, a further survey will be carried out by members of the community. Thereafter, the wildflower areas will need to be cut in Spring and late July/August. In additional cut in Spring and autumn may be necessary in the first years.