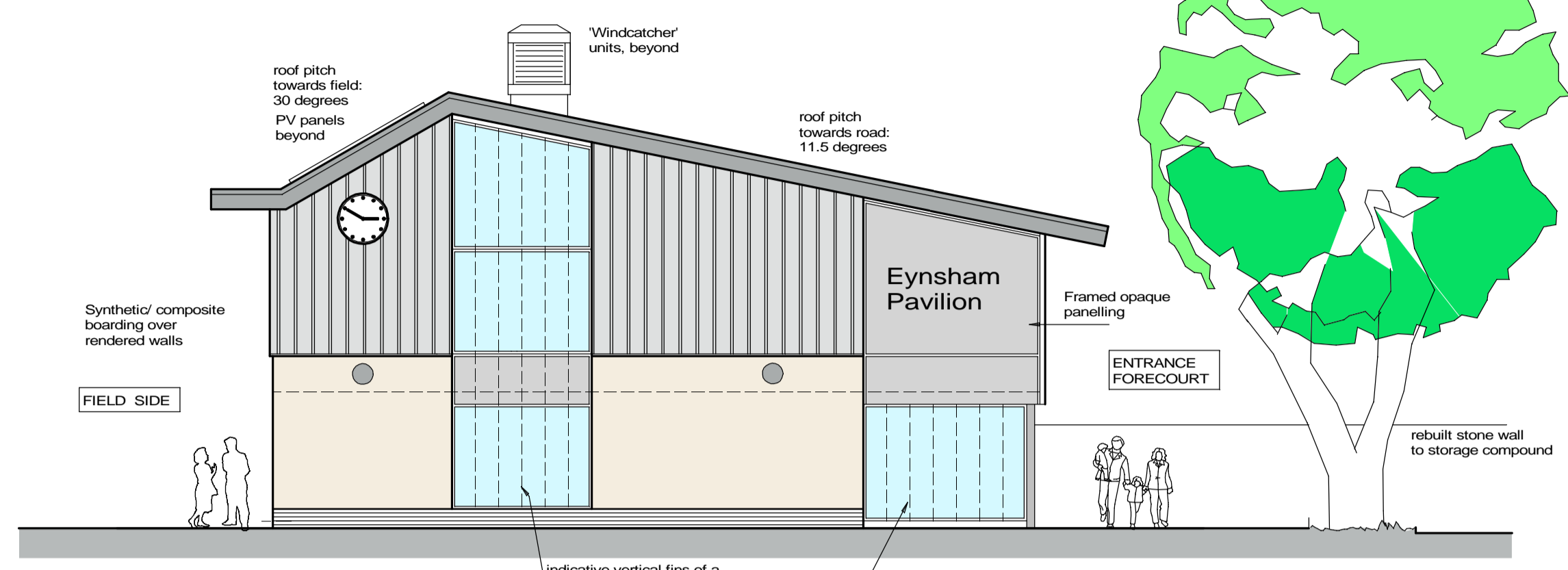
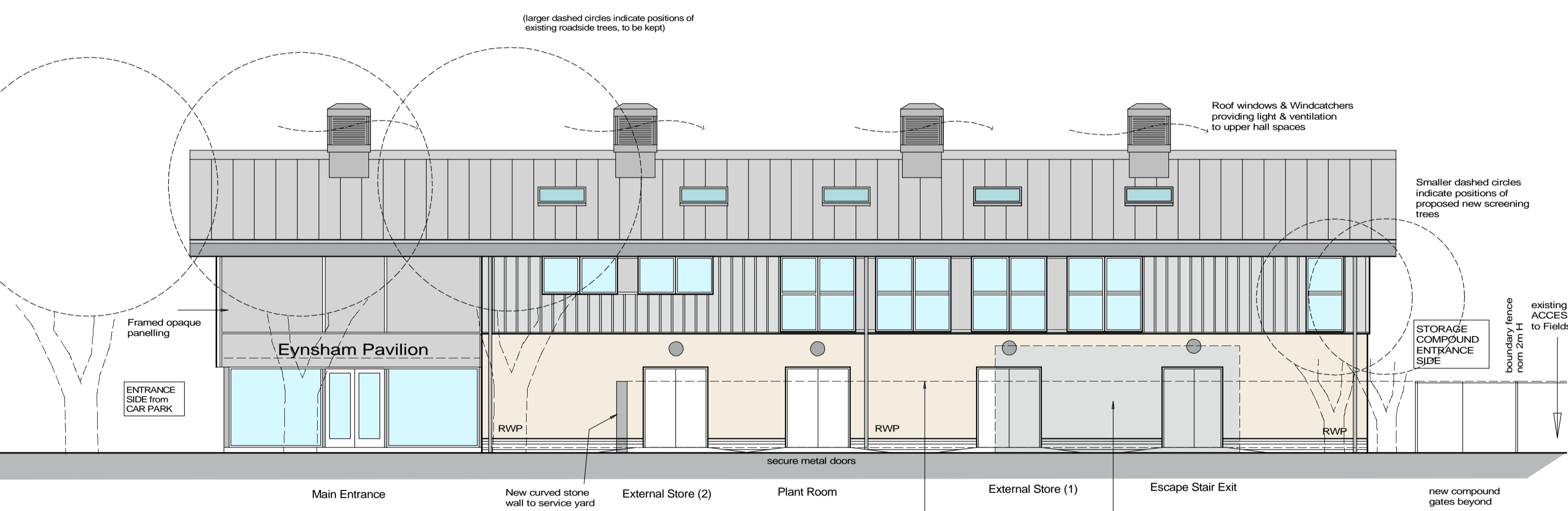


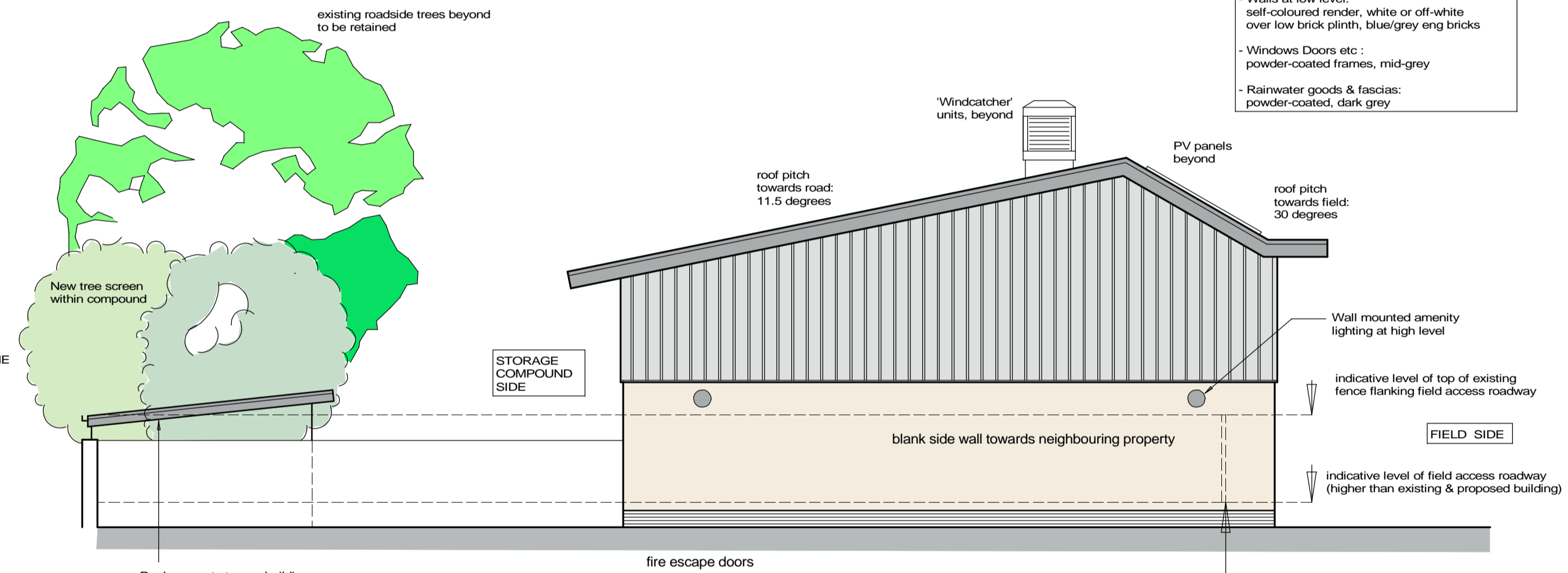
From PLAYING FIELDS
(SOUTH ELEVATION)



SIDE from car park
(EAST ELEVATION)

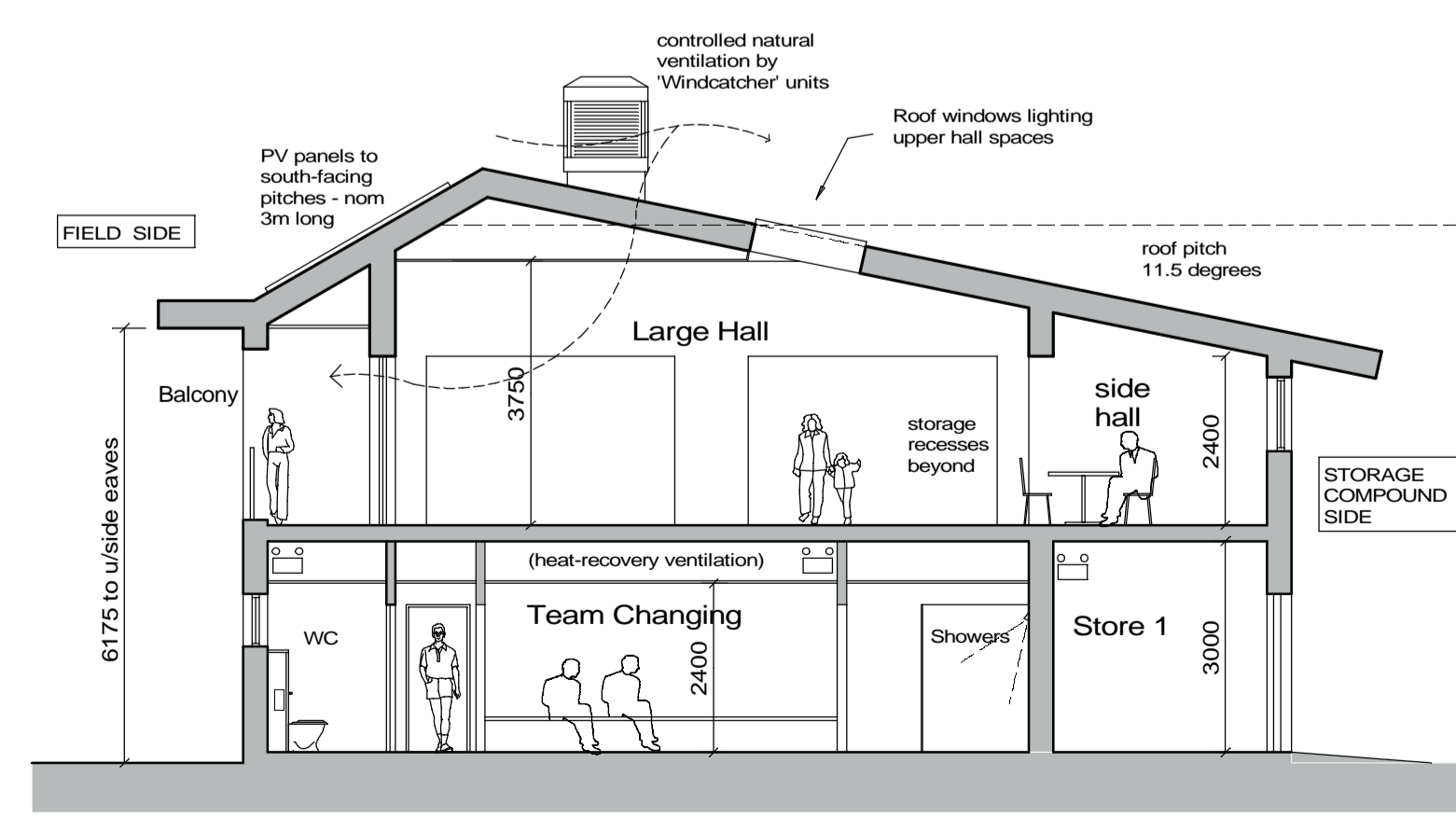


MAIN ENTRANCE from Oxford Road
(NORTH ELEVATION)

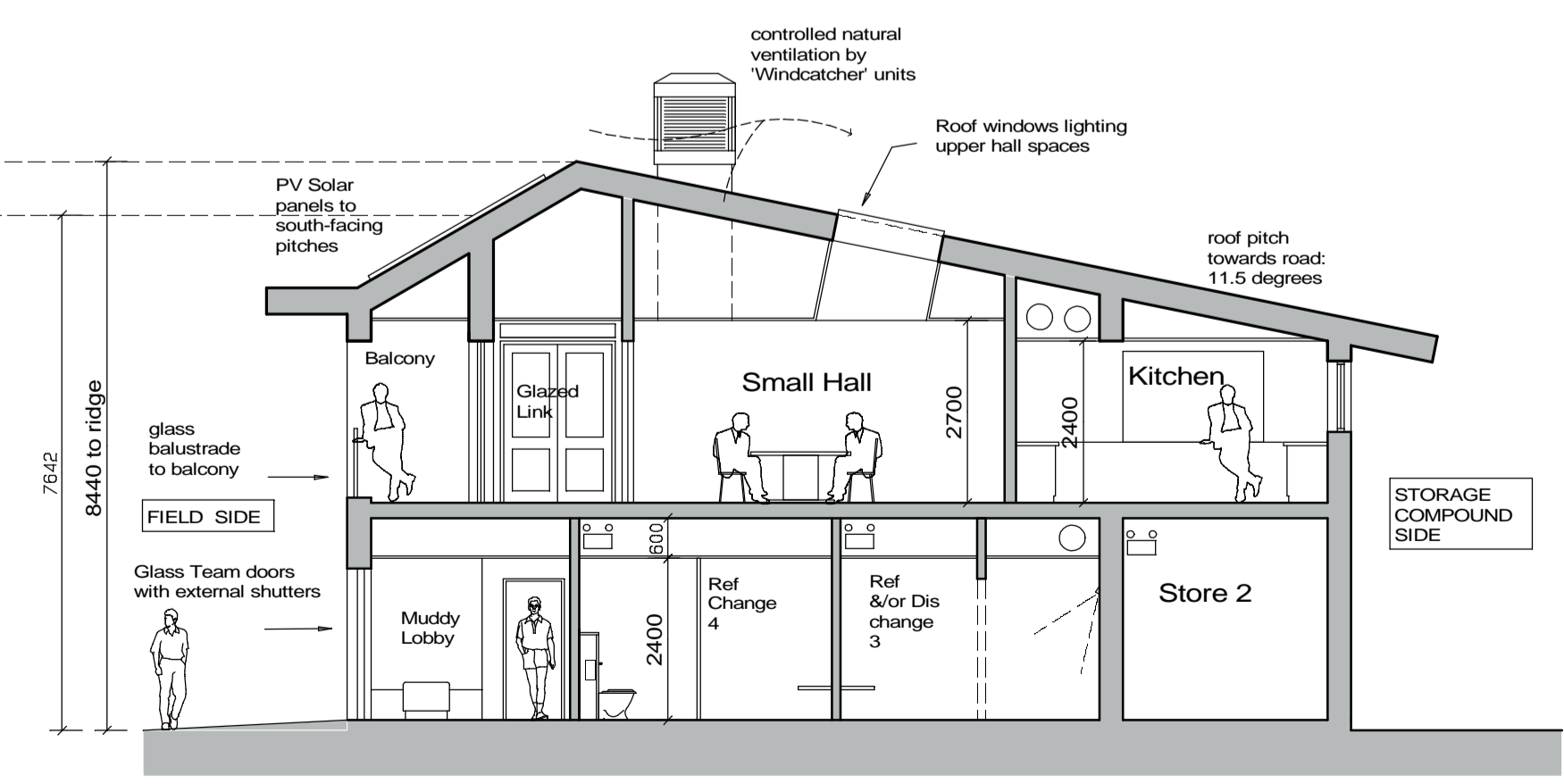


SIDE from access road
(WEST ELEVATION)

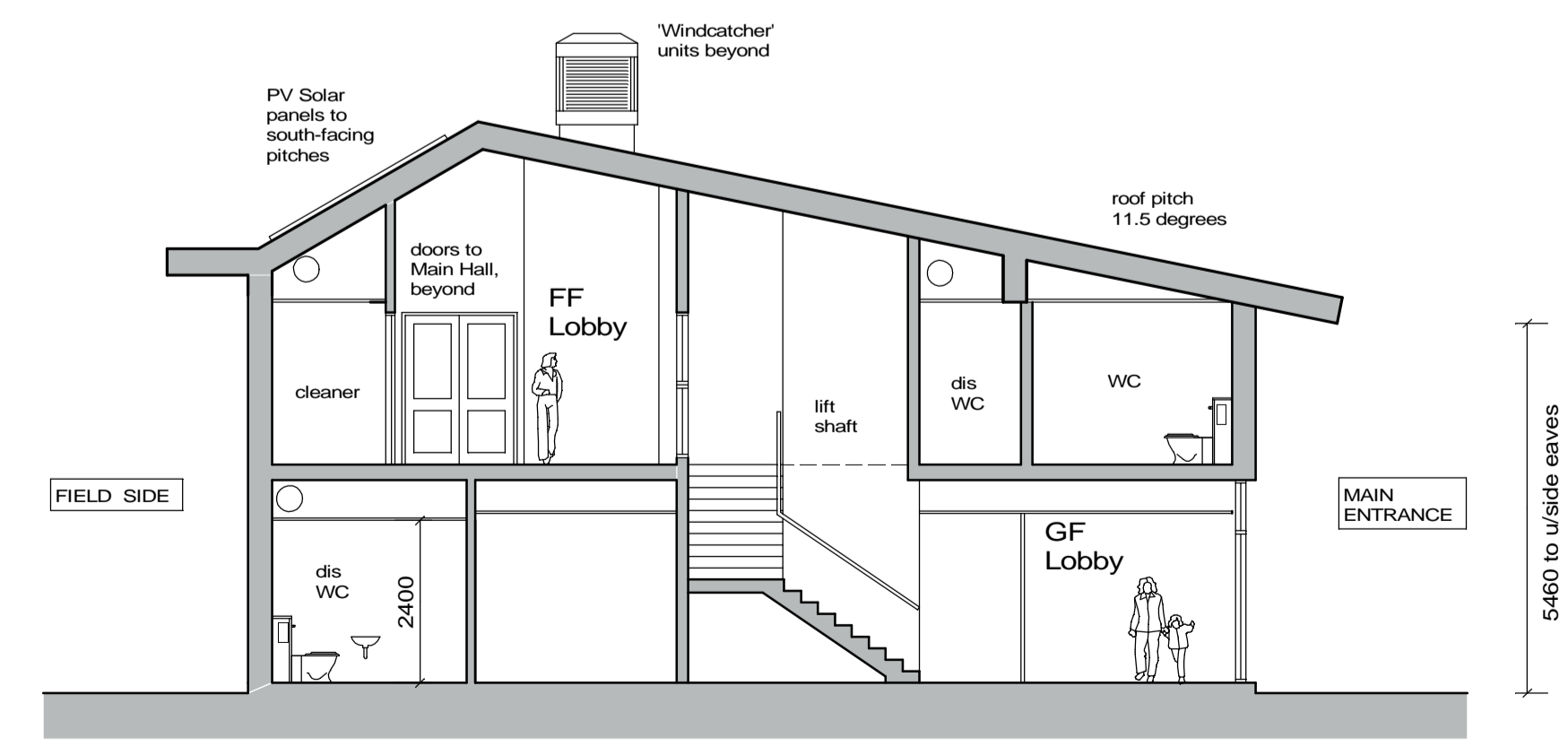
- INDICATIVE MATERIALS:
- Roof: refer to drawing 603 Roof Plan
 - Walls at high level: synthetic boarding, vertical format, mid grey
 - Walls at low level: self-coloured render, white or off-white over low brick finish, blue/grey eng bricks
 - Windows Doors etc.: powder-coated frames, mid-grey
 - Rainwater goods & fascias: powder-coated, dark grey



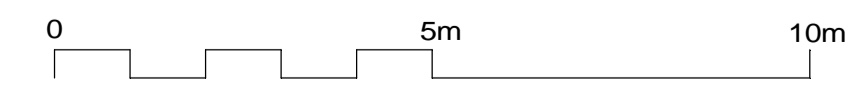
SECTION A-A
(see Plan for section lines)



SECTION B-B



SECTION C-C



Revisions	Date	by	Rev
Tree screen to road amended following tree report	6.11.20		P1
Scheme Option Aug 2020	7.8.20	sw	P1

Client
Eynsham Parish Council

Project
EYNSHAM SPORTS PAVILION
Oxford Road Eynsham

PROPOSED ELEVATIONS & SECTIONS



STANHOPE WILKINSON ASSOCIATES
ARCHITECTS
2 Swinford Farm Eynsham Oxford OX29 4BL
(01865) 883222
E-mail: office@swa-architects.co.uk

Scales	Date	by
1:100 @ A1	Aug 2020	DP
1:200 @ A3		

Job No.	Drawing No.	Rev.
18366	602	P2