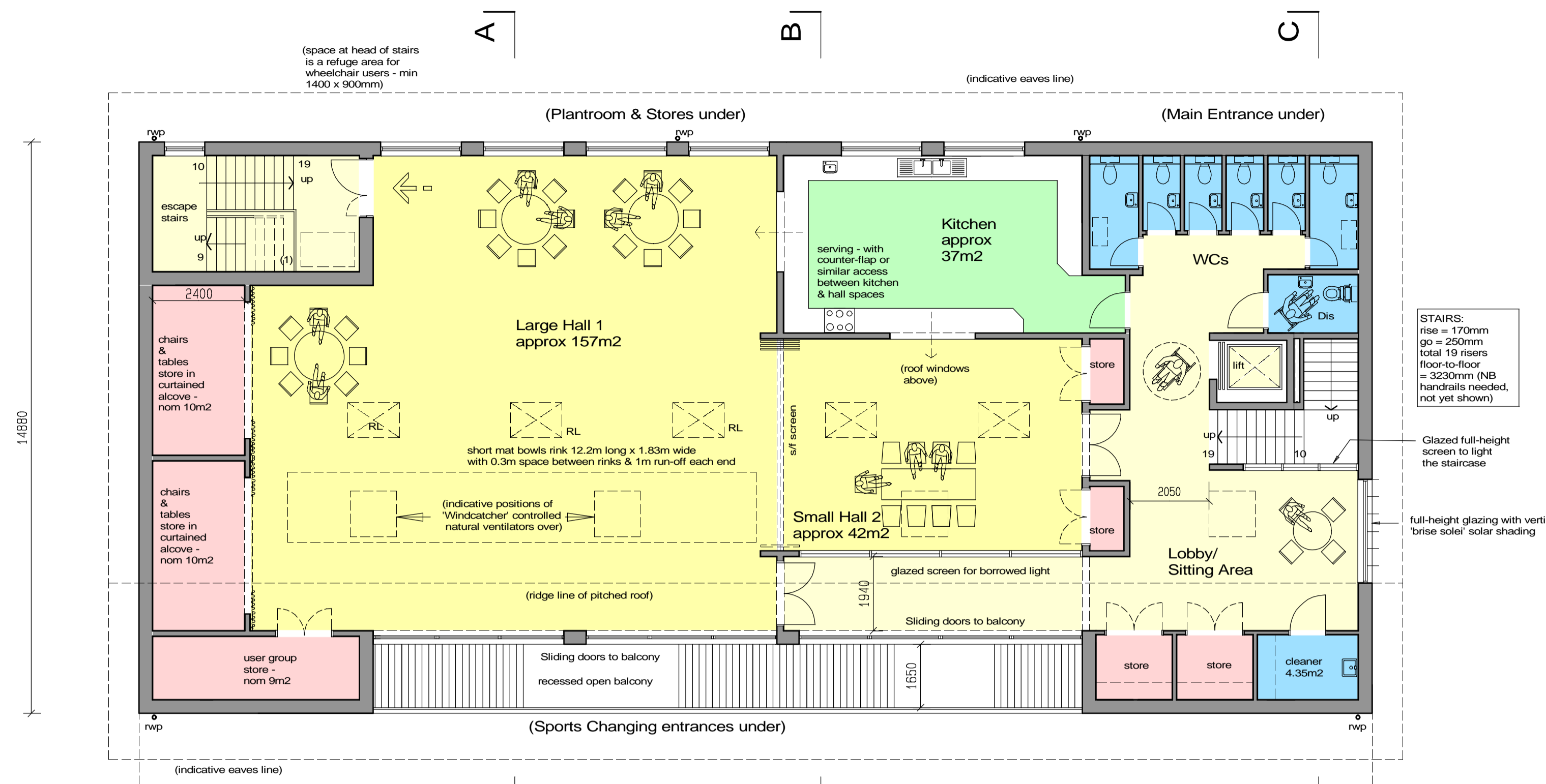


NB main & escape stair widths as drawn will allow maximum First Floor occupancy of approximately 270 persons (NB PC has confirmed max 280 persons at mtg 21.5.19)



FIRST FLOOR PLAN

**FIRST FLOOR**  
Gross Internal Area (GIA) measured to inner face of outer walls = 409m<sup>2</sup>  
(NB EXCLUDES balcony; includes all other areas)

**COMBINED FLOOR AREAS**  
Gross Internal Areas (GIA) as noted for GF & FF and with exclusions as noted = 444m<sup>2</sup> + 409m<sup>2</sup>, thus **TOTAL GIA as drawn = 853m<sup>2</sup>**

**GROUND FLOOR**  
Gross Internal Area (GIA) INCLUDING attached Stores, measured to inner face of outer walls = 444m<sup>2</sup>

**4 x TEAM CHANGING ROOMS**  
size of team changing rooms = 20m<sup>2</sup> in changing area only (sized to Sport England recommendation for Rugby)

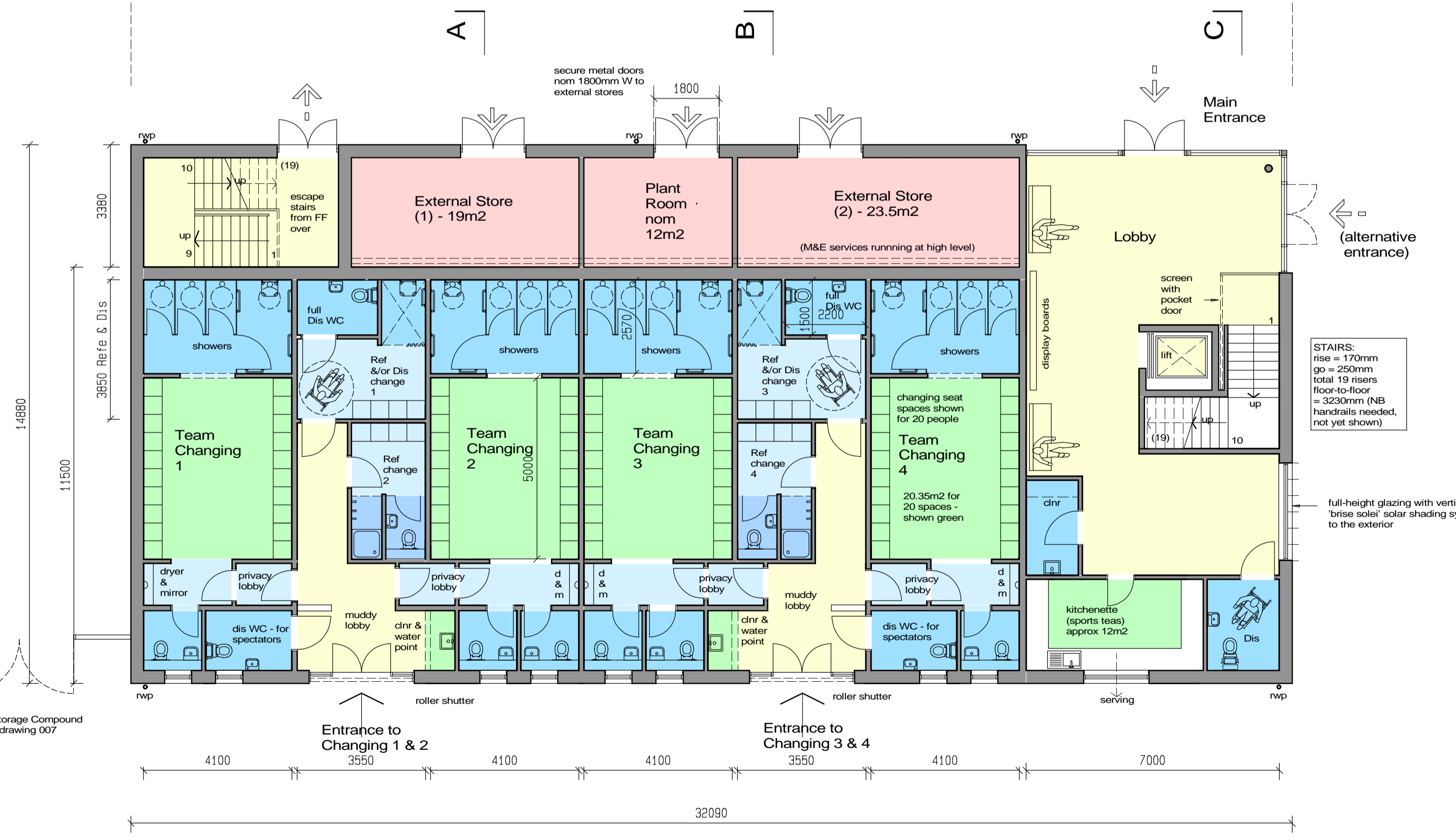
all showers in form of cubicles; including one larger accessible shower cubicle to suit ambulant disabled person - to Sport England 'Clubhouse Design Guidance' p21

2 x dual accessible changing room to suit disabled use OR use by referee / official - to Sport England 'Clubhouse Design Guidance' p22

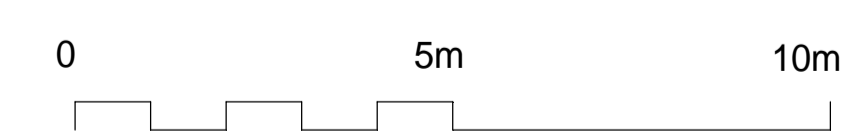
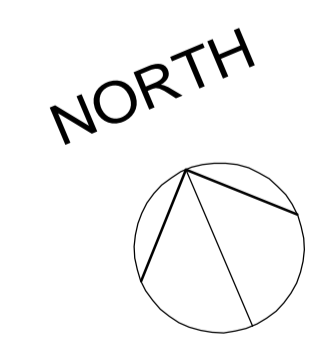
in addition, 2 x standard ref / officials changing rooms

2 x accessible WCs provided in combination with the dual accessible changing rooms - to Sport England 'Clubhouse Design Guidance' p22

(NOTE: for avoidance of disputes, officials may use the opposite changing rooms to the pair used by the contentious teams)



GROUND FLOOR PLAN



Notes  
All dimensions must be checked on site & not scaled from this drawing  
c.SWA Copyright

**SOME COMPARATIVE AREAS:**  
Existing Pavilion:  
- Function Room approx 65m<sup>2</sup>  
- Kitchen approx 9m<sup>2</sup>  
- Changing Rooms only approx 12m<sup>2</sup>  
Eynsham Village Hall:  
- Main Hall 151m<sup>2</sup>  
- Small Hall 73m<sup>2</sup>  
- Kitchen approx 26m<sup>2</sup>

First floor lift lobby enlarged	25.8.20	DP	P2
Scheme option Aug 2020		sw	P1
Revisions	Date	by	Rev

Client  
Eynsham Parish Council

Project  
EYNESHAM SPORTS PAVILION  
Oxford Road Eynsham OX29 3HG

PROPOSED BUILDING PLANS LAYOUT



STANHOPE WILKINSON ASSOCIATES ARCHITECTS  
2 Swinford Farm Eynsham Oxford OX29 4BL  
(01865) 883222  
E-mail: office@swa-architects.co.uk

Scales 1:100 @ A1	Date 7.8.20	by SW
1:200 @ A3		

read with Block Plan drawing 600

Job No.	Drawing No.	Rev.
18366	601	P2